



# IL-20 Polyclonal Antibody

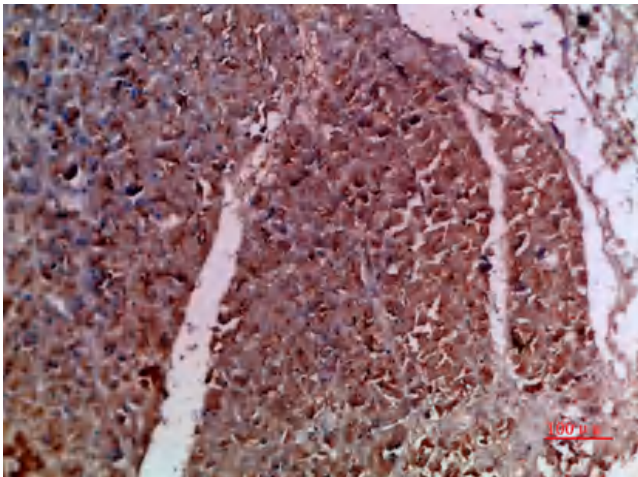
|                                  |  |
|----------------------------------|--|
| <b>Catalog No</b>                | YP-Ab-16087  |
| <b>Isotype</b>                   | IgG  |
| <b>Reactivity</b>                | Human;Mouse;Rat  |
| <b>Applications</b>              | IHC;IF;ELISA   |
| <b>Gene Name</b>                 | IL20 ZCYTO10 UNQ852/PRO1801  |
| <b>Protein Name</b>              | Interleukin-20 (IL-20) (Cytokine Zcyto10)  |
| <b>Immunogen</b>                 | Synthetic peptide from human protein at AA range: 81-130   |
| <b>Specificity</b>               | The antibody detects endogenous IL-20  |
| <b>Formulation</b>               | Liquid in PBS containing 50% glycerol, 0.5% BSA and 0.02% sodium azide.  |
| <b>Source</b>                    | Polyclonal, Rabbit,IgG   |
| <b>Purification</b>              | The antibody was affinity-purified from rabbit antiserum by affinity-chromatography using epitope-specific immunogen.  |
| <b>Dilution</b>                  | IHC-p 1:50-200, ELISA 1:10000-20000. IF 1:50-200   |
| <b>Concentration</b>             | 1 mg/ml  |
| <b>Purity</b>                    | ≥90%   |
| <b>Storage Stability</b>         | -20°C/1 year   |
| <b>Synonyms</b>                  | Interleukin-20 (IL-20;Cytokine Zcyto10)  |
| <b>Observed Band</b>             |  |
| <b>Cell Pathway</b>              | Secreted.  |
| <b>Tissue Specificity</b>        | Expressed in most tissues and five major cell types: epithelial cells (primarily skin, buccal mucosa, tongue, nasal mucosa, lung, ureter, breast, prostate, fallopian tube, and adrenal gland), myoepithelial cells (mainly prostate), endothelial cells (mainly in small vessels or capillaries), macrophages, and skeletal muscle. Isoform 2 was detected in the lung tissue only.   |
| <b>Function</b>                  | function:Cytokine that may be involved in epidermal function and psoriasis. Acts through STAT3.,similarity:Belongs to the IL-10 family.,tissue specificity:Expressed at very low levels in skin, trachea, and other tissues.,  |
| <b>Background</b>                | The protein encoded by this gene is a cytokine structurally related to interleukin 10 (IL10). This cytokine has been shown to transduce its signal through signal transducer and activator of transcription 3 (STAT3) in keratinocytes. A specific receptor for this cytokine is found to be expressed in skin and upregulated dramatically in psoriatic skin, suggesting a role for this protein in epidermal function and psoriasis. [provided by RefSeq, Jul 2008], |
| <b>matters needing attention</b> | Avoid repeated freezing and thawing!   |



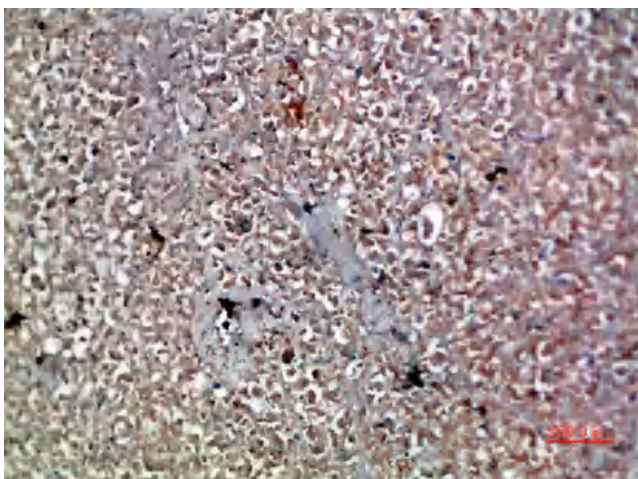
**Usage suggestions**

This product can be used in immunological reaction related experiments. For more information, please consult technical personnel.

**Products Images**



Immunohistochemical analysis of paraffin-embedded human-pancreas, antibody was diluted at 1:200



Immunohistochemical analysis of paraffin-embedded human-pancreas, antibody was diluted at 1:200